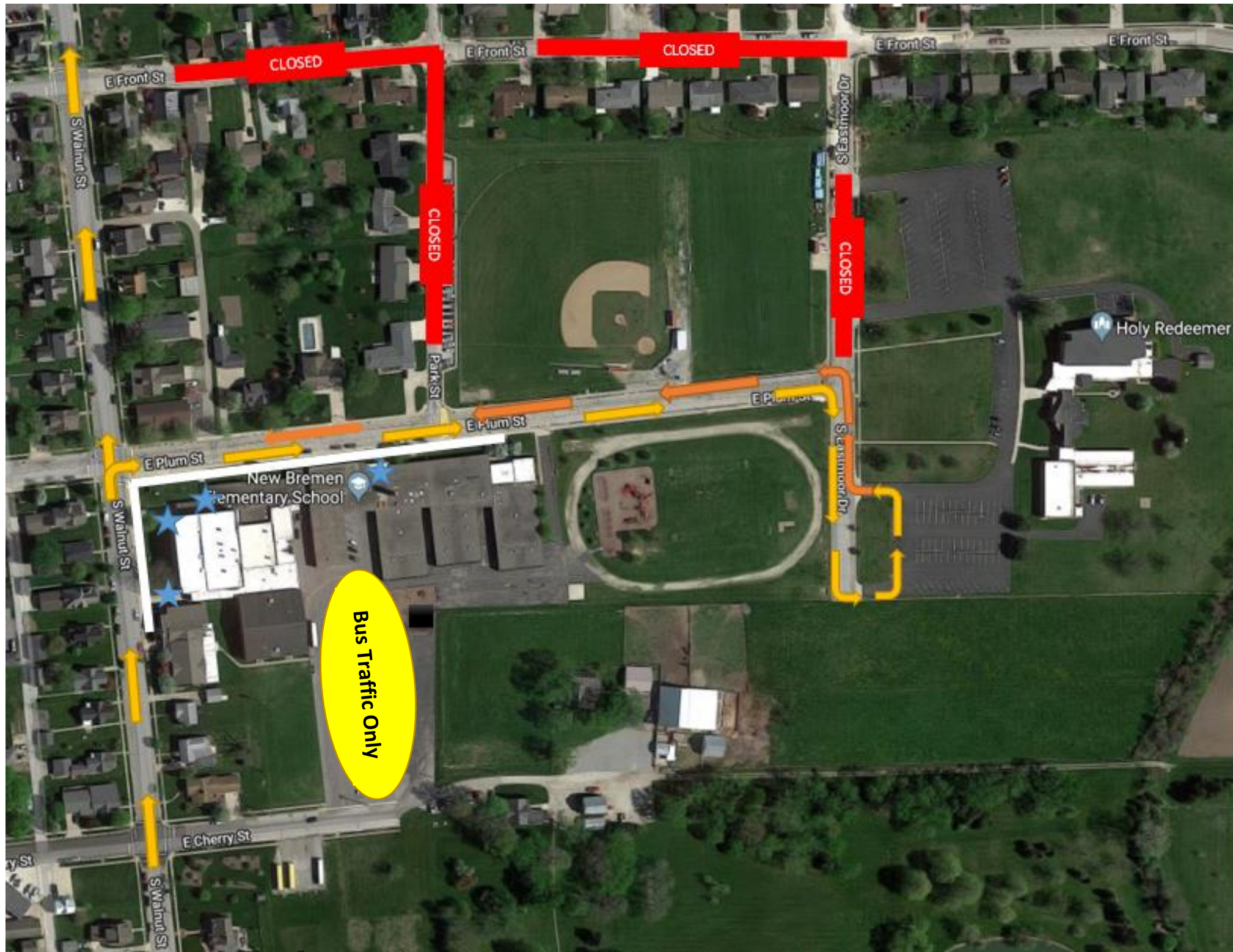


# ELEMENTARY MIDDLE SCHOOL TRAFFIC FLOW



## Attention: Parents

- Due to the village street project, Eastmoor Drive, Park Street and Front Street will be closed until mid-October. We are asking parents to utilize the map to the left both morning drop-off and afternoon pick-up procedures.
- We highly encourage parents to drop students off using the Walnut Street zone along the school curb (Heading North). To prevent students from crossing a line of traffic, please do not drop students off on the southbound side of Walnut Street.
- Drop-off locations on Walnut Street and Plum Street are indicated in white on the map and marked with white paint on the curbs.
- All drop-off and pick-up traffic on Plum Street will be required to continue east, make a loop on the far south entrance of Holy Redeemer Church and head back down Plum Street (west) as indicated on the map.
- We will have assistance from the police department and additional school staff at the drop-off locations and the intersection between Plum Street and Walnut Street.
- All students who are eligible to ride a bus to and from school are encouraged to do so to assist in alleviating additional traffic.
- Thank you for your continued cooperation and patience during this road construction process.